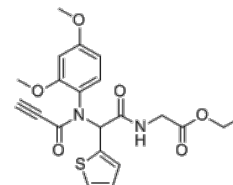


Product Name : PACMA31
Cat. No. : PC-70360
CAS No. : 1401089-31-3
Molecular Formula : C₂₁H₂₂N₂O₆S
Molecular Weight : 430.47
Target : Protein Disulfide Isomerase (PDI)
Solubility : 10 mM in DMSO



Biological Activity

PACMA31 is an orally active, irreversible inhibitor of **protein disulfide isomerase** (PDI), forming a covalent bond with the active site cysteines of PDI.

PACMA31 significantly inhibits human ovarian cancer cells OVCAR-8, HEY, and OVCAR-8 growth with IC₅₀ of 0.9, 1.4, and 0.32 μM.

PACMA31 significantly suppresses ovarian tumor growth without causing toxicity to normal tissues in mouse xenograft model of human OVCAR-8 ovarian cancer.

References

Xu S, et al. *Proc Natl Acad Sci U S A*. 2012 Oct 2;109(40):16348-53.

Vatolin S, et al. *Cancer Res*. 2016 Jun 1;76(11):3340-50.

Caution: Product has not been fully validated for medical applications. Lab Use Only!

E-mail: tech@probechem.com